

**PERKASIE BOROUGH**

**2025 ROADWAY CONDITION SURVEY**

**AND**

**5 TO 15 YEAR RECONSTRUCTION PLAN**

**Prepared for:**

**PERKASIE BOROUGH**

620 West Chestnut Street, P.O. Box 96

Perkasie, PA 18944-0096

Project No. #25-00073

Prepared by Gilmore & Associates, Inc., Borough Engineers: Dated November 4, 2025

Roadway Condition Map (Appendix D)

Prepared by Gilmore & Associates, Inc., Borough Engineers: Dated November 4, 2025

Draft Plan Approved by Perkasie Borough Manager: \_\_\_\_\_

DATE

Plan Approved by Perkasie Borough Council: \_\_\_\_\_

DATE

**PERKASIE BOROUGH  
2025 ROADWAY CONDITION SURVEY**

**TABLE OF CONTENTS**

I. PURPOSE.....	1
II. PAVEMENT CONDITION RATINGS AND ROADWAY SURVEY METHODOLOGY .....	1
III. OVERALL ROADWAY CONDITION RATING .....	2
IV. FINDINGS.....	4
V. CONCLUSIONS AND RECOMMENDATIONS .....	6
APPENDICES	
APPENDIX A – ROADWAY CONDITION RATING DESCRIPTIONS AND EXAMPLES	
APPENDIX B – 2025 ROADWAY CONDITION RATING	
APPENDIX C – 5 TO 15 YEAR ROADWAY RECONSTRUCTION PLAN	
APPENDIX D – PERKASIE BOROUGH ROADWAY CONDITION MAP (Full Scale and Reduced Scale)	

## **I. PURPOSE**

The intent of the 2025 Roadway Condition Survey is to provide the Borough of Perkasio with a current assessment of the existing roadway conditions and to provide recommendations for future roadway repair projects. This document can be used as a guide to help the Borough effectively and efficiently allocate available funding, such as Liquid Fuels Funds, for both current and future roadway repairs. Gilmore & Associates, Inc. (G&A) has prepared this report to assist the Borough with prioritizing annual roadway repairs by maximizing available funding while improving the overall condition and safety of their local roadways for its residents and the general public.

Appendix C of this report includes a recommended 5 to 15 Year Roadway Reconstruction Plan intended to provide the Borough with the opportunity to coordinate future public improvement projects, such as the annual Road Program, Concrete Program, stormwater improvements, etc., as well as, other future projects scheduled by Residents, Developers, PennDOT, and/or local utility service providers. However, it is important to note that the actual roadway repairs completed each year may deviate from the recommended 5 to 15 Year Roadway Reconstruction Plan due to budgetary constraints and unforeseen circumstances. Utilizing a Roadway Reconstruction Plan will ultimately help the Borough better preserve their infrastructure investment.

Please note that this report is a comprehensive document that requires regular updates to the roadway condition ratings and estimated unit costs. Due to the variety of weather conditions experienced in this region, we recommend that the Borough continue to conduct field surveys to visually inspect the entire Borough maintained roadway system at a minimum of every two (2) to three (3) years following the completion of the annual Road Program.

## **II. PAVEMENT CONDITION RATINGS AND ROADWAY SURVEY METHODOLOGY**

The pavement condition rating methodology utilized to assess the condition of the Borough's roadways is based on the American Association of State Highway and Transportation Officials (AASHTO) *Guide for Design of Pavement Structures*. The guide defines the design life stages of a bituminous roadway using condition ratings from 1 through 5. Figure No. 1 shown on the following page helps to illustrate each roadway condition rating. The figure demonstrates that a roadway typically deteriorates linearly over time until a certain point. Once the roadway reaches this point, the rate of deterioration accelerates exponentially. The rate of deterioration of a roadway is based on a combination of factors including but not limited to the structural integrity of the roadway, traffic volume loading and climate changes (i.e. freeze/thaw).

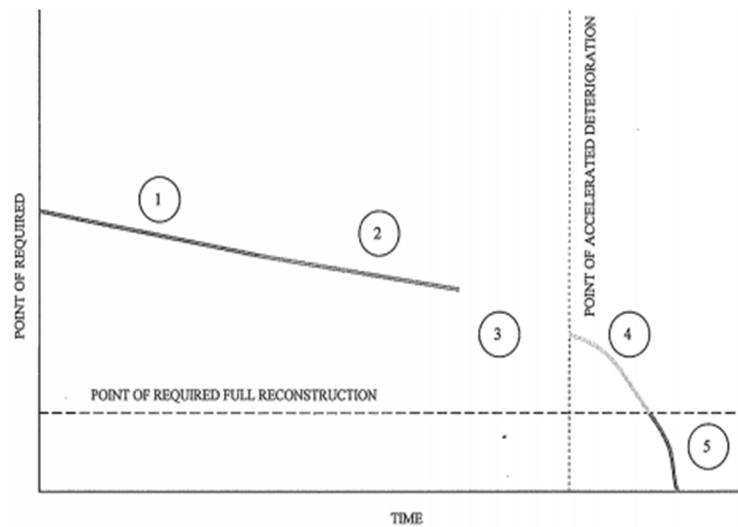


Figure No. 1

As shown in Figure No. 1, Conditions 1 and 2 roadways are considered to be in fairly good condition or recently paved; Condition 3 is the stage where the roadway surface begins the process of deterioration; Condition 4 is the stage where accelerated deterioration of the roadway begins; and Condition 5 is the stage where the roadway typically requires full reconstruction. Please note that in preparation of this survey, Conditions 3 and 4 have been divided into sub-ratings (3, 3.5, 4 and 4.5) to better assess the condition of the roadway and define the rate of deterioration. Detailed descriptions and photographic examples of each roadway condition rating have been provided in Appendix A of this report.

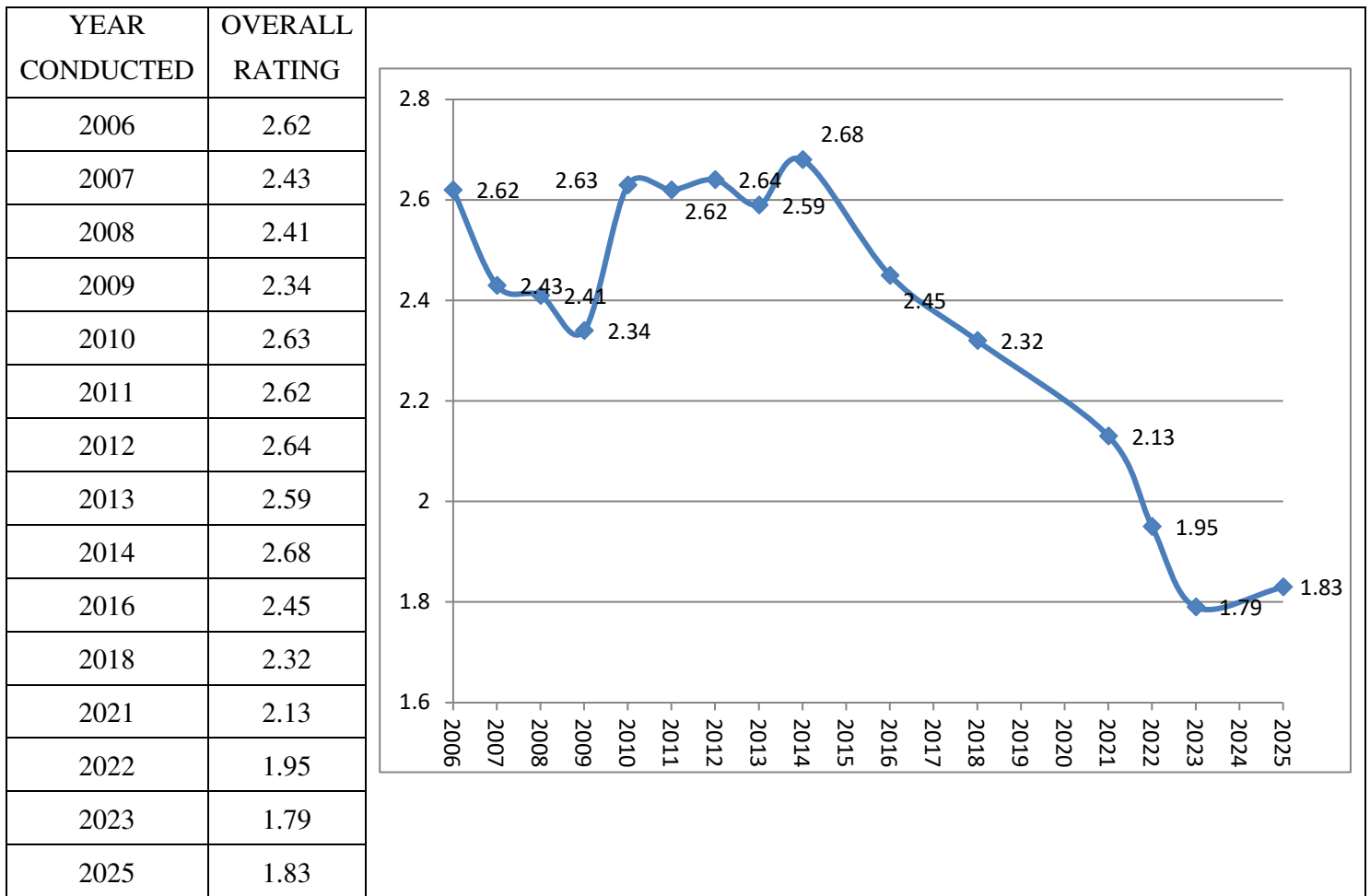
The 2025 Roadway Condition Survey has been prepared using data collected during a field survey and inspection performed by Gilmore & Associates, Inc. and the Public Works Director on October 7, 2025. During the field survey, every road within the Borough limits was visually inspected and assigned a numeric rating between 1 and 5 based on the *AASHTO Guide for Design of Pavement Structures* described above. A summary of the 2025 Roadway Condition Ratings can be found in Appendix B of this report.

### **III. OVERALL ROADWAY CONDITION RATING**

The Overall Roadway Condition Rating is a calculated numerical value based on the pavement conditions and length of each individual roadway within the Borough. This rating is used to compare the current conditions of the roadways to the conditions of previous years. The overall condition rating can be a useful tool to determine how a combination of factors such as weather or construction projects can impact the degradation of the roadways. The goal is to achieve and maintain the lowest possible overall condition rating; by doing so, the Borough will ultimately spend less money to maintain their roadways. Funds can be allocated to lower cost maintenance and repairs, such as crack sealing or mill and overlay, as opposed to the more costly maintenance, such as base repair and complete reconstruction.

The 2025 Roadway Condition Survey indicates that the Borough’s roadways achieved an overall condition rating of 1.83, which represents a slight increase from the 2023 overall condition rating but the second-best overall condition rating observed in the past 19 years. The considerable improvement of the overall condition rating is a result of the Borough’s proactive approach to the road programs combined with the milder winter weather and temperatures observed over the last 11 years. By utilizing an aggressive financial schedule and a strategic approach to prioritize the repair of roadways assigned a Condition Rating of 4, 4.5 or 5 during the 2014 through 2025 Road Programs, the Borough has reversed the deterioration trend and substantially improved the overall roadway condition rating.

**PERKASIE BOROUGH  
ANNUAL OVERALL ROADWAY CONDITION RATING SUMMARY**

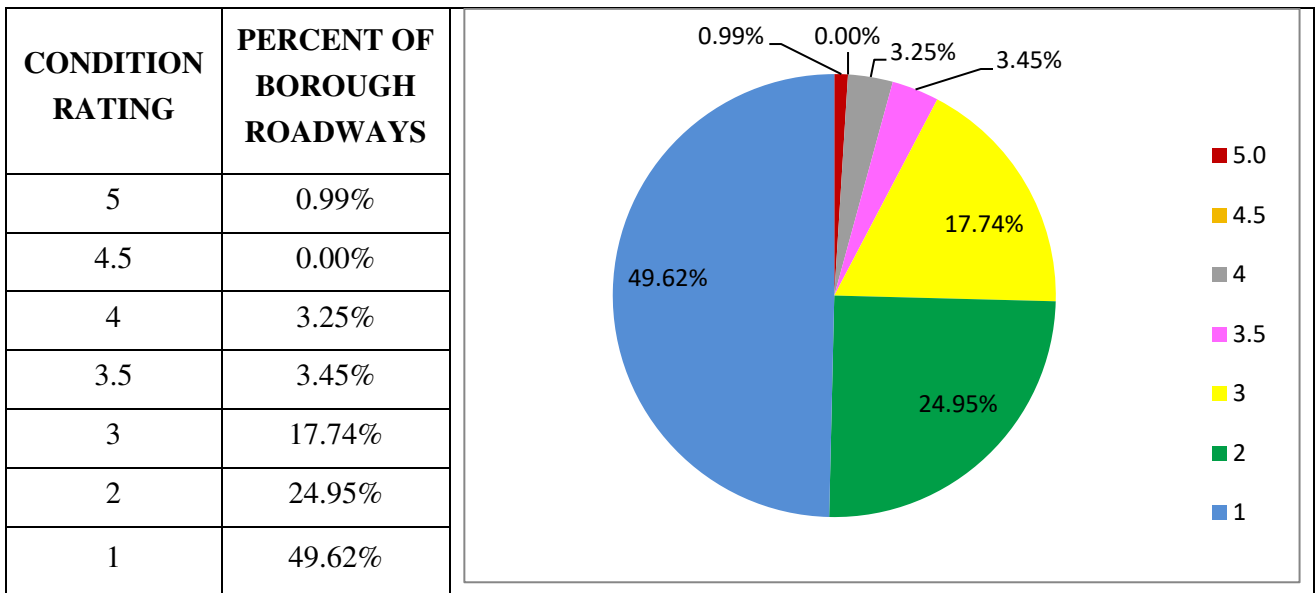


The summary of the Borough’s Overall Roadway Condition Ratings provided above was prepared based on the field surveys conducted from 2006 to 2025 and roadways completed in 2022 and 2023. The ratings were summarized using field survey data conducted by Gilmore & Associates, Inc., as well as utilizing previous editions of this report, as prepared by Boucher & James, Inc. and CKS Engineers, Inc. Please note that based on the results of the annual ratings reported, the Borough requested in 2014 that the Roadway Condition Survey report only be updated once every two years. However, due to the mild winter weather and temperatures, four years have passed since the previous field survey was completed on August 31, 2021.

**IV. FINDINGS**

Based on the results of the 2025 Roadway Condition Survey, the 2025 Roadway Condition Rating Summary graphic provided below demonstrates that approximately half of the Borough owned roadways have been assigned a Condition Rating of 1 and approximately 92.3% of the roadways have been classified as a Condition 3 Rating or better. Please note that the color for each percentage in the chart below matches the colors assigned to each roadway condition rating on the Roadway Condition Map provided in Appendix D.

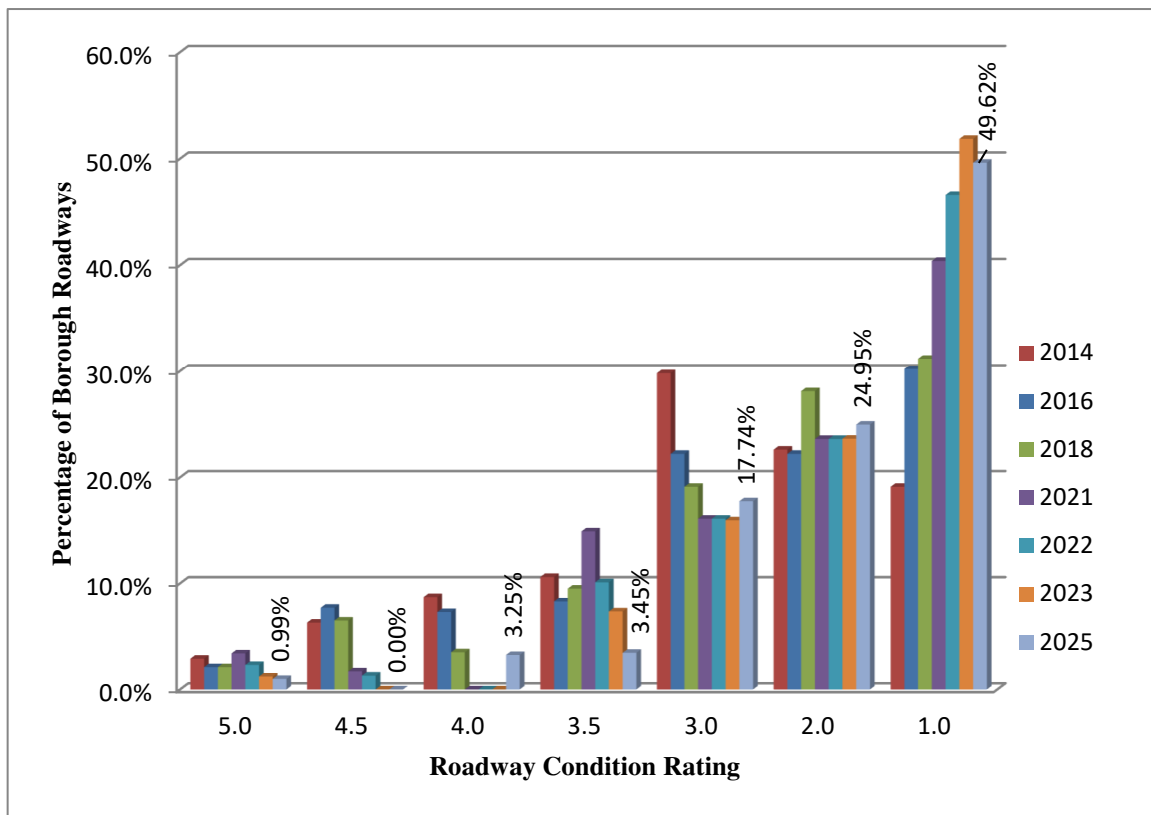
**PERKASIE BOROUGH  
2025 ROADWAY CONDITION RATING SUMMARY UPDATE**



The Year 2014 vs. Year 2016 vs. Year 2018 vs. Year 2021 vs. Year 2022 vs. Year 2023 vs Year 2025 Condition Rating Comparison table on the following page demonstrates considerable changes in the percentages of roadways rated as Conditions 1, 3.5, 4.5, and 5. The shift in the roadway condition rating percentages can be attributed to the Borough’s proactive approach to include roadways of varying condition ratings into their annual road program. By annually completing the maintenance and repair of roadways with varying condition ratings, the Borough will ultimately spend less money to maintain their roadway infrastructure. For example, focusing solely on repairing the Condition 5 roadways will limit the number of roadways that can be completed in any given year. In addition, repairing only the Condition 5 roadways will result in the further deterioration of the Condition 3 to 4.5 roadways and negatively impact the Borough’s Overall Roadway Condition Rating.

Based on historical observation data, a roadway rated as Condition 3.5 can rapidly deteriorate to a Condition 4, 4.5 or 5 within a year depending on the volume of traffic experienced by the roadway and weather conditions. Therefore, the overall improvement of the individual roadway condition ratings in the year 2025 does not discount the continued need for future improvements to the Condition 3.5 to Condition 5 rated roadways which account for approximately 7.7% of the Borough owned roadways.

**PERKASIE BOROUGH  
YEAR 2014, 2016, 2018, 2021, 2022, 2023 AND 2025 CONDITION RATING COMPARISON**



The 5 to 15 Year Roadway Reconstruction Plan provided in Appendix C recommends both short-term and long-term schedule of roadway repairs which are intended to improve the Borough's Overall Roadway Condition Rating. Even though approximately 92.3 percent of the Borough owned roadways are rated as a Condition 3 or better, the 5 Year Roadway Reconstruction Plan still recommends an aggressive yet strategic roadway selection for future road programs. The recommended goal is to repair Condition 3.5 through Condition 5 rated roadways while still incorporating maintenance and repair of Condition 3 rated roadways in localized areas of the Borough.

Please note that the 2025 Roadway Condition Rating and 5 to 15 Year Roadway Reconstruction Plan provided in Appendix B and C respectively, also include an estimated cost of repair based on the square yard and condition rating of each individual roadway. The estimated costs have been prepared by comparing the unit costs received by the Borough from previous Road Program bids, as well as recent unit costs received by local municipalities.

## V. CONCLUSIONS AND RECOMMENDATIONS

The results of the 2025 Roadway Condition Survey indicate a minor increase in the Borough's Overall Roadway Condition Rating since the 2023 update but an improvement since the 2021 Roadway Condition Survey. Although the majority of the Borough owned roadways were found to be in acceptable condition (Condition 3 or better), we note that there was also a higher percentage of roadways that have deteriorated to a Condition Rating of 4.

As indicated in the 5 to 15 Year Roadway Reconstruction Plan in Appendix C, we recommend a combination of Condition 3, 3.5 and 4 rated roadways be the primary selection for the 2026 through 2030 Road Programs in order to continue improving the Borough's overall roadway condition rating.

Overall, we recommend that the Borough continue to implement an aggressive schedule of Condition 3.5, 4 and 5 rated roadways for future road repair projects dependent on the amount of available funding. Based on the recommended 5 to 15 Year Roadway Reconstruction Plan provided in Appendix C, all of the roadways currently rated as Condition 4 and 5 will be repaired by the year 2028. This strategy will allow the Borough to mitigate the roadways currently rated as Condition 4 while also proactively preventing the Condition 3.5 rated roadways from deteriorating to a Condition 5 Rating status.



Please note that this report is a comprehensive document that requires updates and modifications to the condition ratings and estimated unit costs. Due to the variety of weather conditions experienced throughout the year in this region, we recommend that the Borough continue to conduct a field survey and visual inspection of all of the Borough's roadways at a minimum of every two (2) to three (3) years during the summer or fall months. We further recommend that an updated report be provided to Borough Council in the fall in order to incorporate the recommended roadway repair projects into the budget for the upcoming year. Once the Borough determines the scope and budget of the annual Road Program, the residents will have to be notified if there are any required curb and/or sidewalk improvements associated with the upcoming roadway repairs.

Please be aware that the intent of the 2025 Roadway Condition Survey is to provide the Borough with an understanding of the existing conditions of their roadways and a recommendation for future projects. This report should be used as a guide to help the Borough set their roadway repair goals and to determine the most effective and efficient allocation of available funding. It is also important to note that the actual roadway repairs completed each year may deviate from the recommended 5 to 15 Year Roadway Reconstruction Plan due to budgetary constraints and unforeseen circumstances.

## **APPENDIX A**

### **ROADWAY CONDITION RATING DESCRIPTIONS AND EXAMPLES**

**ROADWAY CONDITION RATINGS DESCRIPTIONS AND EXAMPLES**

Rating	Description	Example
<p align="center"><b><u>CONDITION 1</u></b> NEWLY PAVED ROADWAY</p>	<p>Condition 1 roadways appear to be or have been recently paved. They have no noticeable cracking, rutting, spalling or potholes and do not require any short-term attention from the Borough.</p> <p>The estimated cost associated with the repair of a Condition 1 roadway is \$0.00 per square yard as shown in the Roadway Condition Rating and the recommended 5 to 15 Year Roadway Reconstruction Plan provided in Appendix B and C.</p> <p>Based on the total linear feet of Borough roadways, approximately 49.62% of the roadways have been rated as Condition 1.</p>	
<p align="center"><b><u>CONDITION 2</u></b> MINOR SURFACE WEAR</p>	<p>Condition 2 roadways appear to be in generally good condition and may require short-term actions. The roadway base is typically intact and the surface has minimal rutting or linear cracking; there should be no signs of spalling. Crack sealing can be used as preventative maintenance and isolated repairs, such as minor pot holes, may be necessary.</p> <p>The estimated cost associated with the repair of a Condition 2 roadway is \$8.20 per square yard as shown in the Roadway Condition Rating and the recommended 5 to 15 Year Roadway Reconstruction Plan provided in Appendix B and C.</p> <p>Based on the total linear feet of Borough roadways, approximately 24.95% of the roadways have been rated as Condition 2.</p>	

## ROADWAY CONDITION RATINGS DESCRIPTIONS AND EXAMPLES

### CONDITION 3 AND 3.5 MAJOR SURFACE WEAR

Condition 3 or 3.5 roadways appear to be deteriorating on the surface and potentially other pavement layers and require action to prevent further degradation. The roadway base and subbase are typically intact and in an acceptable condition. The roadway surface and potentially other pavement layers may have areas of rutting, linear surface cracking and minimal isolated potholes and areas of potential spalling. Note that the roadways in the pictures to the right have numerous linear surface cracks that were previously sealed; however additional cracks continue to form. No alligator cracking has developed on either roadway which suggests that the roadway has an adequate base and subbase structure.

Repairs for a Condition 3 or 3.5 roadway include resurfacing (i.e. mill and overlay) and the completion of isolated pavement repair caused by potholes or localized spalling. If addressed in a timely and effective manner, these repairs can help prevent a Condition 3 or 3.5 roadway from deteriorating to a Condition 4 or Condition 5 rating, which may require a significant amount of pavement and base repair or possibly complete roadway reconstruction.

The estimated cost associated with the repair of a Condition 3 roadway is \$21.20 per square yard and \$22.80 per square yard for a condition 3.5 roadway as shown in the Roadway Condition Rating and the recommended 5 to 15 Year Roadway Reconstruction Plan provided in Appendix B and C.

Based on the total linear feet of Borough roadways, approximately 17.74% of the roadways have been rated as Condition 3 and 3.45% have been rated as Condition 3.5.



## ROADWAY CONDITION RATINGS DESCRIPTIONS AND EXAMPLES

### CONDITION 4 AND 4.5 MINOR BASE REPAIR

Condition Number 4 or 4.5 roadways appear to have almost completely deteriorated at the surface and consists of damage that extends into the subbase which requires action to prevent the need for full reconstruction. The roadway surface, other pavement layers have numerous areas of severe rutting, linear surface cracking, alligator cracking, major areas of spall, several potholes and areas of exposed pavement base. Note that the roadways in the pictures to the right have numerous areas of linear surface cracking, spalling and exposed subbase.

Repairs for a Condition 4 or 4.5 roadway include resurfacing (i.e. mill and overlay) along with a significant amount of both pavement and base repairs. It is important to note that a Condition 4.5 rating represents a roadway or area of a roadway that has been deemed most critical for attention to prevent reaching a Condition 5 rating. If addressed in a timely and effective manner, these repairs can prevent a Condition 4 or 4.5 roadway from deteriorating to a Condition 5 rating, which may require complete roadway reconstruction.

The estimated cost associated with the repair of a Condition 4 roadway is \$32.70 per square yard and \$33.40 per square yard for a condition 4.5 roadway as shown in the Roadway Condition Rating and the recommended 5 to 15 Year Roadway Reconstruction Plan provided in Appendix B and C.

Based on the total linear feet of Borough roadways, approximately 3.25% of the roadways have been rated as Condition 4 and 0.0% have been rated as Condition 4.5.



## ROADWAY CONDITION RATINGS DESCRIPTIONS AND EXAMPLES

### CONDITION 5 MAJOR BASE REPAIR

Condition 5 roadways appear to have areas of severe rutting, alligator cracking, major areas spalling, and numerous potholes or other areas of exposed pavement base. These types of conditions indicate that the damage to the roadway surface course extends through the subbase. Note that the roadways in the pictures to the right have severe alligator cracking and a significant amount of exposed base course and subbase.

Repairs for a Condition 5 roadway include resurfacing (i.e. mill and overlay) along with an extensive amount of both pavement and base repairs along the entire roadway. A road categorized as Condition Number 5 requires attention from the Borough as soon as funds are available.

The estimated cost associated with the repair of a Condition 5 roadway is \$45.40 per square yard as shown in the Roadway Condition Rating and the recommended 5 to 15 Year Roadway Reconstruction Plan provided in Appendix B and C.

Based on the total linear feet of Borough roadways, approximately 0.99% of the roadways have been rated as Condition 5.



## **APPENDIX B**

### **2025 ROADWAY CONDITION RATING**

## 2025 ROADWAY CONDITION RATING

Street Name	Section of Roadway	Condition Rating	Volume Rating	Total Rating	Length of Road	Width of Road	Area of Road	Cost per SY	Cost to Repair
<b>Condition '5' Rated Roadways</b>									
Park Avenue*	Ridge Road to Country Ridge	5	5	25	1,470	24	3,970	\$45.40	\$ 180,238.00
								<b>Estimated Cost: \$</b>	<b>180,238.00</b>
								<b>Estimated Percentage:</b>	<b>0.99%</b>
<b>Condition '4' Rated Roadways</b>									
3rd Street	Walnut St to Market St	4	3	12	1,380	32	4,957	\$32.70	\$ 162,093.90
Amherst Circle	entire road	4	1	4	500	26	1,494	\$32.70	\$ 48,853.80
Chelsea Court	entire road	4	1	4	275	24	945	\$32.70	\$ 30,897.87
Dorchester Lane	entire road	4	2	8	2,700	34	10,250	\$32.70	\$ 335,175.00
								<b>Estimated Cost: \$</b>	<b>577,020.57</b>
								<b>Estimated Percentage:</b>	<b>3.25%</b>
<b>Condition '3.5' Rated Roadways</b>									
Branford Terrace	entire road	3.5	1	4	760	24	2,077	\$22.80	\$ 47,355.60
Coventry Way	entire road	3.5	2	7	945	34	3,620	\$22.80	\$ 82,536.00
Hampton Circle	entire road	3.5	2	7	1,210	26	3,546	\$22.80	\$ 80,848.80
Penn Alley	entire road	3.5	2	7	460	18	970	\$22.80	\$ 22,116.00
Pine Street	8th St to 9th St	3.5	3	11	330	26	1,003	\$22.80	\$ 22,868.40
S. 8th Street	Pine St to Park Ave	3.5	1	4	400	25	1,161	\$22.80	\$ 26,470.80
Waltham Lane	entire road	3.5	2	7	1,045	25	2,953	\$22.80	\$ 67,328.40
								<b>Estimated Cost: \$</b>	<b>349,524.00</b>
								<b>Estimated Percentage:</b>	<b>3.45%</b>

\*Estimated cost of repair includes only cost of roadway repair and not required storm sewer improvements.

## 2025 ROADWAY CONDITION RATING

Street Name	Section of Roadway	Condition Rating	Volume Rating	Total Rating	Length of Road	Width of Road	Area of Road	Cost per SY	Cost to Repair
<b>Condition '3' Rated Roadways</b>									
3rd Street	Park Ave to Walnut St	3	3	9	860	32	3,108	\$21.20	\$ 65,889.60
5th Street	Market St to Borough Line	3	5	15	3,890	32	13,881	\$21.20	\$ 294,277.20
7th Street	Market St to Vine St.	3	3	9	1,628	32	5,838	\$21.20	\$ 123,765.60
7th Street	Park Ave to Market St	3	3	9	2,165	32	7,748	\$21.20	\$ 164,257.60
Bramble Lane	entire road	3	1	3	500	24	1,383	\$21.20	\$ 29,319.60
Country Pointe Circle	entire road	3	1	3	675	32	2,856	\$21.20	\$ 60,540.13
Essex Court	Branford Ter to Main St	3	2	6	1,885	32	6,752	\$21.20	\$ 143,142.40
Kent Lane	entire road	3	1	3	1,330	35	5,222	\$21.20	\$ 110,706.40
Milliken Court	entire road within Borough	3	1	3	460	33	3,769	\$21.20	\$ 79,895.73
N. 6th Street	Market St to Buttonwood St	3	3	9	2,200	26	6,406	\$21.20	\$ 135,807.20
Park Avenue	Railroad to 3rd St	3	5	15	1,390	32	4,992	\$21.20	\$ 105,830.40
Race Street	3rd St to 5th St	3	3	9	875	32	3,161	\$21.20	\$ 67,013.20
S. 6th Street	Chestnut St to Walnut St	3	3	9	350	32	1,294	\$21.20	\$ 27,432.80
S. Main Street	Walnut St to Spruce St	3	5	15	650	32	2,361	\$21.20	\$ 50,053.20
Souder Lane	entire road	3	1	3	315	32	1,537	\$21.20	\$ 32,582.04
Stonycrest Drive	entire road within Borough	3	2	6	1,480	32	5,312	\$21.20	\$ 112,614.40
Strassburger Road	entire road	3	2	6	2,760	33	10,170	\$21.20	\$ 215,604.00
Strawberry Lane	entire road	3	2	6	875	33	4,082	\$21.20	\$ 86,531.33
W. Walnut Street	Constitution Ave to 5th St	3	4	12	1,800	32	6,450	\$21.20	\$ 136,740.00
Walker Way	entire road	3	2	6	390	34	1,523	\$21.20	\$ 32,287.60
<b>Estimated Cost:</b>								<b>\$</b>	<b>2,074,290.43</b>
<b>Estimated Percentage:</b>									<b>17.74%</b>

## 2025 ROADWAY CONDITION RATING

Street Name	Section of Roadway	Condition Rating	Volume Rating	Total Rating	Length of Road	Width of Road	Area of Road	Cost per SY	Cost to Repair
<b>Condition '2' Rated Roadways</b>									
10th Street	10th St cul-de-sac	2	1	2	220	18	490	\$8.20	\$ 4,018.00
12th Street	Borough Line to Cul-de-Sac	2	1	2	1,110	32	3,997	\$8.20	\$ 32,775.40
12th Street	Stub from Park Ave	2	1	2	325	14	556	\$8.20	\$ 4,559.20
3rd Street	Market St to Race St	2	3	6	690	32	2,465	\$8.20	\$ 20,213.00
3rd Street	Race St to Callowhill St	2	3	6	1,130	31	3,942	\$8.20	\$ 32,324.40
4th Street	Borough Line to Arthur Ave	2	3	6	1,270	32	4,566	\$8.20	\$ 37,441.20
7th Street	1108 7th St to Blooming Glen Dr	2	3	6	700	32	2,539	\$8.20	\$ 20,819.80
9th Street	Railroad to Borough Line	2	3	6	5,590	38	23,652	\$8.20	\$ 193,946.40
Arch Street	3rd St to 7th St	2	2	4	1,620	32	5,810	\$8.20	\$ 47,642.00
Arch Street	9th St to end (past 10th)	2	2	4	565	30	1,933	\$8.20	\$ 15,850.60
E. Spruce Street	S. Main St to Constitution Ave	2	4	8	2,660	34	10,099	\$8.20	\$ 82,811.80
Highland Court	entire road	2	1	2	200	28	1,138	\$8.20	\$ 9,335.24
Highwood Court	entire road	2	1	2	330	28	1,191	\$8.20	\$ 9,768.02
Hillcrest Road	entire road within Borough	2	3	6	630	18	1,310	\$8.20	\$ 10,742.00
Oak Avenue	entire road	2	2	4	335	22	869	\$8.20	\$ 7,125.80
Parkridge Court	entire road	2	1	2	225	26	1,148	\$8.20	\$ 9,411.78
Parkridge Drive	entire road	2	2	4	2,885	25	8,064	\$8.20	\$ 66,124.80
Poplar Street	entire road	2	1	2	180	10	250	\$8.20	\$ 2,050.00
S. Main Street	Spruce St to Borough Line	2	5	10	4,275	33	15,725	\$8.20	\$ 128,945.00
Shadywood Drive	5th St to Shadywood Pl	2	2	4	3,600	30	12,050	\$8.20	\$ 98,810.00
Shadywood Drive	Shadywood Pl to Highland Dr.	2	2	4	3,600	30	12,000	\$8.20	\$ 98,400.00
Vine Street	9th St to Ridge Ave	2	2	4	651	24	1,735	\$8.20	\$ 14,227.00
W. Chestnut Street	2nd St to 5th St	2	2	4	1,020	32	3,677	\$8.20	\$ 30,151.40
W. Chestnut Street	8th St to 9th St	2	3	6	385	32	1,419	\$8.20	\$ 11,635.80
W. Chestnut Street	7th St to 5th St	2	2	4	815	32	2,948	\$8.20	\$ 24,173.60
W. Market Street	2nd St to 6th St	2	5	10	1,475	32	5,294	\$8.20	\$ 43,410.80
W. Walnut Street	7th St to 5th St	2	4	8	750	32	2,717	\$8.20	\$ 22,279.40
<b>Estimated Cost:</b>								<b>\$</b>	<b>1,078,992.44</b>
<b>Estimated Percentage:</b>									<b>24.95%</b>

## 2025 ROADWAY CONDITION RATING

Street Name	Section of Roadway	Condition Rating	Volume Rating	Total Rating	Length of Road	Width of Road	Area of Road	Cost per SY	Cost to Repair
<b>Condition '1' Rated Roadways</b>									
10th Street	Race St to Vine St	1	1	1	407	20	905	\$0.00	\$ -
2nd Street	Walnut St to Market St	1	4	4	1,650	32	5,917	\$0.00	\$ -
2nd Street	Market St to Arch St	1	4	4	380	16	726	\$0.00	\$ -
4th Street	Park Ave to Walnut St	1	3	3	1,000	32	3,606	\$0.00	\$ -
4th Street	Walnut St to Market St	1	3	3	1,220	32	4,388	\$0.00	\$ -
4th Street	Market St to Vine St	1	3	3	750	32	2,675	\$0.00	\$ -
7th Street	901 7th St to 1025 7th St	1	3	3	1,238	32	4,400	\$0.00	\$ -
7th Street	1025 7th St to 1108 7th St	1	3	3	720	32	2,560	\$0.00	\$ -
7th Street	Callowhill St. to 901 7th St	1	3	3	1,930	32	6,862	\$0.00	\$ -
7th Street	Vine St to Callowhill St.	1	3	3	388	32	1,380	\$0.00	\$ -
8th Street	124 8th St to Race St	1	4	4	345	26	997	\$0.00	\$ -
8th Street	Buttonwood St to Callowhill St	1	2	2	325	27	1,025	\$0.00	\$ -
8th Street	Chestnut St to Market St	1	5	5	495	32	1,810	\$0.00	\$ -
8th Street	Market St to 124 8th St	1	4	4	645	32	2,293	\$0.00	\$ -
8th Street/Vine Street	Callowhill St./7th St	1	4	4	675	31	2,375	\$0.00	\$ -
Arch Street	8th St to 9th St	1	2	2	221	26	688	\$0.00	\$ -
Arthur Avenue	entire road	1	3	3	765	38	3,280	\$0.00	\$ -
Blooming Glen Drive	5th St to 7th St	1	5	5	1,590	32	5,703	\$0.00	\$ -
Blooming Glen Drive	7th St to Ridge Rd	1	5	5	1,337	19	2,873	\$0.00	\$ -
Bridge Street	entire road	1	4	4	310	24	877	\$0.00	\$ -
Buttonwood Street	7th St to 5th St	1	2	2	1,225	32	4,406	\$0.00	\$ -
Buttonwood Street	7th St to 8th St	1	2	2	250	18	550	\$0.00	\$ -
Callowhill Street	5th St to 6th St, portion	1	5	5	250	32	939	\$0.00	\$ -
Callowhill Street	Ridge Rd to beyond 6th St	1	5	5	2,585	30	8,667	\$0.00	\$ -
Cedar Avenue	4th St to 5th St	1	1	1	355	18	760	\$0.00	\$ -
Chestnut Court	entire road	1	1	1	775	29	2,497	\$0.00	\$ -
Clover Lane	entire road	1	1	1	1,370	24	3,703	\$0.00	\$ -
Concord Place	entire road	1	1	1	260	28	1,366	\$0.00	\$ -
Connor Lane	entire road	1	1	1	803	34	3,034	\$0.00	\$ -
Daniella Circle	entire road	1	1	1	354	34	1,760	\$0.00	\$ -
Dill Avenue	entire road	1	1	1	1,323	30	4,410	\$0.00	\$ -
E. Chestnut Street	entire road	1	2	2	325	30	1,133	\$0.00	\$ -
E. Market Street	entire road	1	1	1	1,370	32	4,921	\$0.00	\$ -
E. Spruce Street	S. Main St to cul-de-sac	1	2	2	844	32	3,000	\$0.00	\$ -
Elm Avenue	4th St to 5th St	1	1	1	381	26	1,100	\$0.00	\$ -

**2025 ROADWAY CONDITION RATING**

<b>Street Name</b>	<b>Section of Roadway</b>	<b>Condition Rating</b>	<b>Volume Rating</b>	<b>Total Rating</b>	<b>Length of Road</b>	<b>Width of Road</b>	<b>Area of Road</b>	<b>Cost per SY</b>	<b>Cost to Repair</b>
<b>Condition '1' Rated Roadways Continued</b>									
Elm Avenue	5th St to 6th St	1	1	1	345	26	1,047	\$0.00	\$ -
Essex Court	Branford Ter to cul-de-sac	1	2	2	565	26	1,045	\$0.00	\$ -
Fairview Avenue	entire road	1	1	1	1,455	22	3,557	\$0.00	\$ -
Fern Drive	entire road	1	1	1	520	26	1,552	\$0.00	\$ -
Grandview Avenue	entire road	1	1	1	1,543	32	5,485	\$0.00	\$ -
Green Ridge Circle	entire road	1	1	1	365	34	16,204	\$0.00	\$ -
Hickory Drive	entire road	1	1	1	592	32	2,713	\$0.00	\$ -
Hidden Meadow Drive	entire road	1	1	1	1,145	34	4,326	\$0.00	\$ -
Highland Drive	entire road	1	2	2	1,900	34	7,228	\$0.00	\$ -
Hunters Run Road	entire road	1	2	2	1,610	26	4,701	\$0.00	\$ -
Hyde Lane	entire road	1	1	1	745	32	2,699	\$0.00	\$ -
Jefferson Drive	entire road	1	2	2	1,555	28	4,888	\$0.00	\$ -
Juliana Way	entire road	1	1	1	978	34	3,745	\$0.00	\$ -
Lexington Way	entire road	1	1	1	440	30	1,868	\$0.00	\$ -
Lombard Street	entire road	1	2	2	1,030	26	3,481	\$0.00	\$ -
Market Street Alley	entire road	1	3	3	455	16	859	\$0.00	\$ -
Marshall Street	Buttonwood St to Callowhill St	1	1	1	310	22	808	\$0.00	\$ -
Marshall Street	Race St to Callowhill St	1	2	2	580	23	1,482	\$0.00	\$ -
Meadow Lane	entire road within Borough	1	2	2	425	35	1,703	\$0.00	\$ -
Neighbors Way	entire road	1	1	1	1,020	32	4,186	\$0.00	\$ -
Nob Hill Drive	entire road	1	2	2	1,185	32	4,534	\$0.00	\$ -
North Lane	entire road	1	2	2	315	26	960	\$0.00	\$ -
Old Post Court	entire road	1	1	1	215	82	1,223	\$0.00	\$ -
Old Post Road	entire road	1	2	2	1,572	32	5,590	\$0.00	\$ -
Park Avenue	Country Ridge to the railroad	1	5	5	776	32	2,760	\$0.00	\$ -
Park Avenue	Country Ridge Portion	1	5	5	638	32	2,268	\$0.00	\$ -
Penny Lane	entire road	1	2	2	2,625	34	9,967	\$0.00	\$ -
Pine Street	9th St to Country Ridge	1	3	3	100	26	339	\$0.00	\$ -
Pleasant Run Place	entire road	1	1	1	662	28	2,060	\$0.00	\$ -
Race Street	5th St to 6th St	1	3	3	515	32	1,831	\$0.00	\$ -
Race Street	6th St to 7th St	1	3	3	485	32	1,774	\$0.00	\$ -
Race Street	8th St to 9th St	1	3	3	220	32	782	\$0.00	\$ -
Race Street	Ridge Ave to 9th St	1	3	3	728	30	2,425	\$0.00	\$ -
Revere Way	entire road	1	1	1	375	30	1,744	\$0.00	\$ -
Ridge Avenue	entire road	1	4	4	1,770	28	5,507	\$0.00	\$ -

**2025 ROADWAY CONDITION RATING**

Street Name	Section of Roadway	Condition Rating	Volume Rating	Total Rating	Length of Road	Width of Road	Area of Road	Cost per SY	Cost to Repair
<b>Condition '1' Rated Roadways Continued</b>									
Rustic Drive	entire road	1	2	2	1,120	30	3,783	\$0.00	\$ -
S. 6th Street	Market St to Chestnut St	1	3	3	340	32	1,209	\$0.00	\$ -
S. 6th Street	Spruce St to Elm Ave	1	3	3	1,250	28	3,889	\$0.00	\$ -
Shadywood Place	entire road	1	2	2	325	30	1,083	\$0.00	\$ -
Spring Court	entire road	1	1	1	440	26	1,756	\$0.00	\$ -
Spring Lane	entire road	1	1	1	1,515	26	4,427	\$0.00	\$ -
Sugarbush Drive	entire road	1	1	1	373	36	1,542	\$0.00	\$ -
Summit Avenue	entire road	1	1	1	1,145	18	2,340	\$0.00	\$ -
Tunnel Road	entire road excl. PennDOT portion	1	2	2	100	25	278	\$0.00	\$ -
Union Street	entire road	1	1	1	820	34	3,913	\$0.00	\$ -
Vine Street	3rd St to 6th St	1	3	3	1,250	32	4,444	\$0.00	\$ -
Virginia Avenue	entire road	1	1	1	1,356	32	4,820	\$0.00	\$ -
W. Market Street	6th St to the railroad	1	5	5	775	32	2,806	\$0.00	\$ -
W. Market Street	Ridge Rd to Cedar Ridge Ct	1	2	2	355	32	1,312	\$0.00	\$ -
W. Spruce Street	3rd St to 4th St	1	3	3	350	32	1,244	\$0.00	\$ -
W. Spruce Street	4th St to 5th St	1	3	3	340	32	1,259	\$0.00	\$ -
W. Spruce Street	5th St to 7th St	1	3	3	600	32	2,183	\$0.00	\$ -
Wyckford Drive	Branford Terrace to Borough Line	1	3	3	1,197	32	4,255	\$0.00	\$ -
Wyckford Drive	Essex Ct North to Borough Line	1	3	3	429	32	1,525	\$0.00	\$ -
Wyckford Drive	Essex Ct South to Branford Terrace	1	3	3	728	32	2,590	\$0.00	\$ -
Wyckford Way	entire road	1	2	2	615	35	2,442	\$0.00	\$ -
								<b>Estimated Cost: \$</b>	<b>-</b>
								<b>Estimated Percentage:</b>	<b>49.62%</b>

**APPENDIX C**

**5 TO 15 YEAR ROADWAY RECONSTRUCTION PLAN**

**5 TO 15 YEAR ROADWAY RECONSTRUCTION PLAN**

Street Name	Section of Roadway	Condition Rating	Volume Rating	Total Rating	Length of Road	Width of Road	Area of Road	Cost per SY	Estimated Cost to Repair
<b>2026 Road Program</b>									
Amherst Circle	entire road	4	1	4	500	26	1,494	\$ 32.70	\$ 48,853.80
Branford Terrace	entire road	3.5	1	4	760	24	2,077	\$ 22.80	\$ 47,355.60
Chelsea Court	entire road	4	1	4	275	24	945	\$ 32.70	\$ 30,897.87
Dorchester Lane	entire road	4	2	8	2,700	34	10,250	\$ 32.70	\$ 335,175.00
Hampton Circle	entire road	3.5	2	7	1,210	26	3,546	\$ 22.80	\$ 80,848.80
Waltham Lane	entire road	3.5	2	7	1,045	25	2,953	\$ 22.80	\$ 67,328.40
<b>Estimated Cost 2026:</b>									<b>\$ 610,459.47</b>
<b>2027 Road Program</b>									
Park Avenue*	Ridge Road to Country Ridge	5	5	25	1,470	24	3,970	\$ 45.40	\$ 180,238.00
<b>Estimated Cost 2027:</b>									<b>\$ 180,238.00</b>
<b>2028 Road Program</b>									
3rd Street	Park Ave to Walnut St	3	3	9	860	32	3,108	\$ 21.20	\$ 65,889.60
3rd Street	Walnut St to Market St	4	3	12	1,380	32	4,957	\$ 32.70	\$ 162,093.90
Park Avenue	Railroad to 3rd St	3	5	15	1,390	32	4,992	\$ 21.20	\$ 105,830.40
Penn Alley	entire road	3.5	2	7	460	18	970	\$ 22.80	\$ 22,116.00
Pine Street	8th St to 9th St	3.5	3	11	330	26	1,003	\$ 22.80	\$ 22,868.40
S. 6th Street	Chestnut St to Walnut St	3	3	9	350	32	1,294	\$ 21.20	\$ 27,432.80
S. 8th Street	Pine St to Park Ave	3.5	1	4	400	25	1,161	\$ 22.80	\$ 26,470.80
<b>Estimated Cost 2028:</b>									<b>\$ 432,701.90</b>
<b>2029 Road Program</b>									
Bramble Lane	entire road	3	1	3	500	24	1,383	\$ 21.20	\$ 29,319.60
Coventry Way	entire road	3.5	2	7	945	34	3,620	\$ 22.80	\$ 82,536.00
Kent Lane	entire road	3	1	3	1,330	35	5,222	\$ 21.20	\$ 110,706.40
Strawberry Lane	entire road	3	2	6	875	33	4,082	\$ 21.20	\$ 86,531.33
Walker Way	entire road	3	2	6	390	34	1,523	\$ 21.20	\$ 32,287.60
<b>Estimated Cost 2029:</b>									<b>\$ 341,380.93</b>
<b>2030 Road Program</b>									
Country Pointe Circle	entire road	3	1	3	675	32	2,856	\$ 21.20	\$ 60,540.13
Essex Court	Branford Ter to Main St	3	2	6	1,885	32	6,752	\$ 21.20	\$ 143,142.40
S. Main Street	Walnut St to Spruce St	3	5	15	650	32	2,361	\$ 21.20	\$ 50,053.20
W. Walnut Street	Constitution Ave to 5th St	3	4	12	1,800	32	6,450	\$ 21.20	\$ 136,740.00
<b>Estimated Cost 2030:</b>									<b>\$ 390,475.73</b>
<b>2031 - 2036 Road Programs</b>									
Milliken Court	entire road within Borough	3	1	3	460	33	3,769	\$ 21.20	\$ 79,895.73
Souder Lane	entire road	3	1	3	315	32	1,537	\$ 21.20	\$ 32,582.04
Stonycrest Drive	entire road within Borough	3	2	6	1,480	32	5,312	\$ 21.20	\$ 112,614.40
Strassburger Road	entire road	3	2	6	2,760	33	10,170	\$ 21.20	\$ 215,604.00
<b>Estimated Cost 2031-2036:</b>									<b>\$ 440,696.17</b>

\*Estimated cost of repair includes only cost of roadway repair and not required storm sewer improvements.

**5 TO 15 YEAR ROADWAY RECONSTRUCTION PLAN**

Street Name	Section of Roadway	Condition Rating	Volume Rating	Total Rating	Length of Road	Width of Road	Area of Road	Cost per SY	Estimated Cost to Repair
<b>2032 - 2037 Road Programs</b>									
4th Street	Borough Line to Arthur Ave	2	3	6	1,270	32	4,566	\$ 8.20	\$ 37,441.20
5th Street	Market St to Borough Line	3	5	15	3,890	32	13,881	\$ 21.20	\$ 294,277.20
7th Street	Park Ave to Market St	3	3	9	2,165	32	7,748	\$ 21.20	\$ 164,257.60
Oak Avenue	entire road	2	2	4	335	22	869	\$ 8.20	\$ 7,125.80
W. Walnut Street	7th St to 5th St	2	4	8	750	32	2,717	\$ 8.20	\$ 22,279.40
<b>Estimated Cost 2032-2037:</b>									<b>\$ 525,381.20</b>
<b>2033 - 2038 Road Programs</b>									
3rd Street	Market St to Race St	2	3	6	690	32	2,465	\$ 8.20	\$ 20,213.00
3rd Street	Race St to Callowhill St	2	3	6	1,130	31	3,942	\$ 8.20	\$ 32,324.40
7th Street	Market St to Vine St.	3	3	9	1,628	32	5,838	\$ 21.20	\$ 123,765.60
Arch Street	3rd St to 7th St	2	2	4	1,620	32	5,810	\$ 8.20	\$ 47,642.00
N. 6th Street	Market St to Buttonwood St	3	3	9	2,200	26	6,406	\$ 21.20	\$ 135,807.20
Race Street	3rd St to 5th St	3	3	9	875	32	3,161	\$ 21.20	\$ 67,013.20
W. Chestnut Street	2nd St to 5th St	2	2	4	1,020	32	3,677	\$ 8.20	\$ 30,151.40
W. Chestnut Street	7th St to 5th St	2	2	4	815	32	2,948	\$ 8.20	\$ 24,173.60
W. Market Street	2nd St to 6th St	2	5	10	1,475	32	5,294	\$ 8.20	\$ 43,410.80
<b>Estimated Cost 2033-2038:</b>									<b>\$ 524,501.20</b>
<b>2034 - 2039 Road Programs</b>									
10th Street	10th St cul-de-sac	2	1	2	220	18	490	\$ 8.20	\$ 4,018.00
12th Street	Borough Line to Cul-de-Sac	2	1	2	1,110	32	3,997	\$ 8.20	\$ 32,775.40
12th Street	Stub from Park Ave	2	1	2	325	14	556	\$ 8.20	\$ 4,559.20
7th Street	1108 7th St to Blooming Glen Dr	2	3	6	700	32	2,539	\$ 8.20	\$ 20,819.80
9th Street	Railroad to Borough Line	2	3	6	5,590	38	23,652	\$ 8.20	\$ 193,946.40
Arch Street	9th St to end (past 10th)	2	2	4	565	30	1,933	\$ 8.20	\$ 15,850.60
E. Spruce Street	S. Main St to Constitution Ave	2	4	8	2,660	34	10,099	\$ 8.20	\$ 82,811.80
<b>Estimated Cost 2034-2039:</b>									<b>\$ 354,781.20</b>
<b>2035 - 2040 Road Programs</b>									
Highland Court	entire road	2	1	2	200	28	1,138	\$ 8.20	\$ 9,335.24
Highwood Court	entire road	2	1	2	330	28	1,191	\$ 8.20	\$ 9,768.02
Hillcrest Road	entire road within Borough	2	3	6	630	18	1,310	\$ 8.20	\$ 10,742.00
Parkridge Court	entire road	2	1	2	225	26	1,148	\$ 8.20	\$ 9,411.78
Parkridge Drive	entire road	2	2	4	2,885	25	8,064	\$ 8.20	\$ 66,124.80
Poplar Street	entire road	2	1	2	180	10	250	\$ 8.20	\$ 2,050.00
S. Main Street	Spruce St to Borough Line	2	5	10	4,275	33	15,725	\$ 8.20	\$ 128,945.00
Shadywood Drive	5th St to Shadywood Pl	2	2	4	3,600	30	12,050	\$ 8.20	\$ 98,810.00
Shadywood Drive	Shadywood Pl to Highland Dr.	2	2	4	3,600	30	12,000	\$ 8.20	\$ 98,400.00
Vine Street	9th St to Ridge Ave	2	2	4	651	24	1,735	\$ 8.20	\$ 14,227.00
W. Chestnut Street	8th St to 9th St	2	3	6	385	32	1,419	\$ 8.20	\$ 11,635.80
<b>Estimated Cost 2035-2040:</b>									<b>\$ 459,449.64</b>

**5 TO 15 YEAR ROADWAY RECONSTRUCTION PLAN**

Street Name	Section of Roadway	Condition Rating	Volume Rating	Total Rating	Length of Road	Width of Road	Area of Road	Cost per SY	Estimated Cost to Repair
<b>2041+ Road Program</b>									
10th Street	Race St to Vine St	1	1	1	407	20	905	\$ -	\$ -
2nd Street	Walnut St to Market St	1	4	4	1,650	32	5,917	\$ -	\$ -
2nd Street	Market St to Arch St	1	4	4	380	16	726	\$ -	\$ -
4th Street	Park Ave to Walnut St	1	3	3	1,000	32	3,606	\$ -	\$ -
4th Street	Walnut St to Market St	1	3	3	1,220	32	4,388	\$ -	\$ -
4th Street	Market St to Vine St	1	3	3	750	32	2,675	\$ -	\$ -
7th Street	901 7th St to 1025 7th St	1	3	3	1,238	32	4,400	\$ -	\$ -
7th Street	1025 7th St to 1108 7th St	1	3	3	720	32	2,560	\$ -	\$ -
7th Street	Callowhill St. to 901 7th St	1	3	3	1,930	32	6,862	\$ -	\$ -
7th Street	Vine St to Callowhill St.	1	3	3	388	32	1,380	\$ -	\$ -
8th Street	124 8th St to Race St	1	4	4	345	26	997	\$ -	\$ -
8th Street	Buttonwood St to Callowhill St	1	2	2	325	27	1,025	\$ -	\$ -
8th Street	Chestnut St to Market St	1	5	5	495	32	1,810	\$ -	\$ -
8th Street	Market St to 124 8th St	1	4	4	645	32	2,293	\$ -	\$ -
8th Street/Vine Street	Callowhill St./7th St	1	4	4	675	31	2,375	\$ -	\$ -
Arch Street	8th St to 9th St	1	2	2	221	26	688	\$ -	\$ -
Arthur Avenue	entire road	1	3	3	765	38	3,280	\$ -	\$ -
Blooming Glen Drive	5th St to 7th St	1	5	5	1,590	32	5,703	\$ -	\$ -
Blooming Glen Drive	7th St to Ridge Rd	1	5	5	1,337	19	2,873	\$ -	\$ -
Bridge Street	entire road	1	4	4	310	24	877	\$ -	\$ -
Buttonwood Street	7th St to 5th St	1	2	2	1,225	32	4,406	\$ -	\$ -
Buttonwood Street	7th St to 8th St	1	2	2	250	18	550	\$ -	\$ -
Callowhill Street	5th St to 6th St, portion	1	5	5	250	32	939	\$ -	\$ -
Callowhill Street	Ridge Rd to beyond 6th St	1	5	5	2,585	30	8,667	\$ -	\$ -
Cedar Avenue	4th St to 5th St	1	1	1	355	18	760	\$ -	\$ -
Chestnut Court	entire road	1	1	1	775	29	2,497	\$ -	\$ -
Clover Lane	entire road	1	1	1	1,370	24	3,703	\$ -	\$ -
Concord Place	entire road	1	1	1	260	28	1,366	\$ -	\$ -
Connor Lane	entire road	1	1	1	803	34	3,034	\$ -	\$ -
Daniella Circle	entire road	1	1	1	354	34	1,760	\$ -	\$ -
Dill Avenue	entire road	1	1	1	1,323	30	4,410	\$ -	\$ -
E. Chestnut Street	entire road	1	2	2	325	30	1,133	\$ -	\$ -
E. Market Street	entire road	1	1	1	1,370	32	4,921	\$ -	\$ -
E. Spruce Street	S. Main St to cul-de-sac	1	2	2	844	32	3,000	\$ -	\$ -
Elm Avenue	4th St to 5th St	1	1	1	381	26	1,100	\$ -	\$ -
Elm Avenue	5th St to 6th St	1	1	1	345	26	1,047	\$ -	\$ -
Essex Court	Branford Ter to cul-de-sac	1	2	2	565	26	1,045	\$ -	\$ -
Fairview Avenue	entire road	1	1	1	1,455	22	3,557	\$ -	\$ -
Fern Drive	entire road	1	1	1	520	26	1,552	\$ -	\$ -
Grandview Avenue	entire road	1	1	1	1,543	32	5,485	\$ -	\$ -

**5 TO 15 YEAR ROADWAY RECONSTRUCTION PLAN**

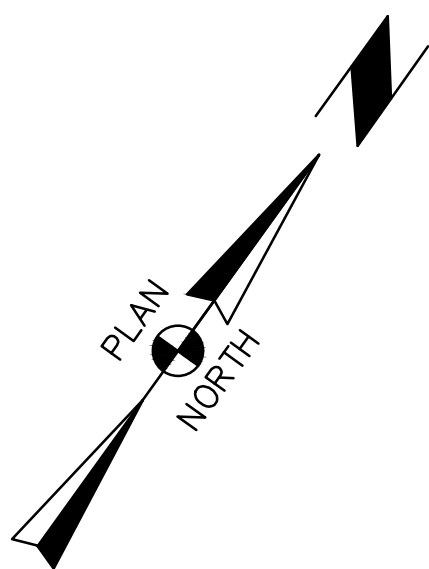
Street Name	Section of Roadway	Condition Rating	Volume Rating	Total Rating	Length of Road	Width of Road	Area of Road	Cost per SY	Estimated Cost to Repair
<b>2041+ Road Program Continued</b>									
Green Ridge Circle	entire road	1	1	1	365	34	16,204	\$ -	\$ -
Hickory Drive	entire road	1	1	1	592	32	2,713	\$ -	\$ -
Hidden Meadow Drive	entire road	1	1	1	1,145	34	4,326	\$ -	\$ -
Highland Drive	entire road	1	2	2	1,900	34	7,228	\$ -	\$ -
Hunters Run Road	entire road	1	2	2	1,610	26	4,701	\$ -	\$ -
Hyde Lane	entire road	1	1	1	745	32	2,699	\$ -	\$ -
Jefferson Drive	entire road	1	2	2	1,555	28	4,888	\$ -	\$ -
Juliana Way	entire road	1	1	1	978	34	3,745	\$ -	\$ -
Lexington Way	entire road	1	1	1	440	30	1,868	\$ -	\$ -
Lombard Street	entire road	1	2	2	1,030	26	3,481	\$ -	\$ -
Market Street Alley	entire road	1	3	3	455	16	859	\$ -	\$ -
Marshall Street	Buttonwood St to Callowhill St	1	1	1	310	22	808	\$ -	\$ -
Marshall Street	Race St to Callowhill St	1	2	2	580	23	1,482	\$ -	\$ -
Meadow Lane	entire road within Borough	1	2	2	425	35	1,703	\$ -	\$ -
Neighbors Way	entire road	1	1	1	1,020	32	4,186	\$ -	\$ -
Nob Hill Drive	entire road	1	2	2	1,185	32	4,534	\$ -	\$ -
North Lane	entire road	1	2	2	315	26	960	\$ -	\$ -
Old Post Court	entire road	1	1	1	215	82	1,223	\$ -	\$ -
Old Post Road	entire road	1	2	2	1,572	32	5,590	\$ -	\$ -
Park Avenue	Country Ridge to the railroad	1	5	5	776	32	2,760	\$ -	\$ -
Park Avenue	Country Ridge Portion	1	5	5	638	32	2,268	\$ -	\$ -
Penny Lane	entire road	1	2	2	2,625	34	9,967	\$ -	\$ -
Pine Street	9th St to Country Ridge	1	3	3	100	26	339	\$ -	\$ -
Pleasant Run Place	entire road	1	1	1	662	28	2,060	\$ -	\$ -
Race Street	5th St to 6th St	1	3	3	515	32	1,831	\$ -	\$ -
Race Street	6th St to 7th St	1	3	3	485	32	1,774	\$ -	\$ -
Race Street	8th St to 9th St	1	3	3	220	32	782	\$ -	\$ -
Race Street	Ridge Ave to 9th St	1	3	3	728	30	2,425	\$ -	\$ -
Revere Way	entire road	1	1	1	375	30	1,744	\$ -	\$ -
Ridge Avenue	entire road	1	4	4	1,770	28	5,507	\$ -	\$ -
Rustic Drive	entire road	1	2	2	1,120	30	3,783	\$ -	\$ -
S. 6th Street	Market St to Chestnut St	1	3	3	340	32	1,209	\$ -	\$ -
S. 6th Street	Spruce St to Elm Ave	1	3	3	1,250	28	3,889	\$ -	\$ -
Shadywood Place	entire road	1	2	2	325	30	1,083	\$ -	\$ -
Spring Court	entire road	1	1	1	440	26	1,756	\$ -	\$ -
Spring Lane	entire road	1	1	1	1,515	26	4,427	\$ -	\$ -
Sugarbush Drive	entire road	1	1	1	373	36	1,542	\$ -	\$ -
Summit Avenue	entire road	1	1	1	1,145	18	2,340	\$ -	\$ -
Tunnel Road	entire road excl. PennDOT portion	1	2	2	100	25	278	\$ -	\$ -
Union Street	entire road	1	1	1	820	34	3,913	\$ -	\$ -
Vine Street	3rd St to 6th St	1	3	3	1,250	32	4,444	\$ -	\$ -
Virginia Avenue	entire road	1	1	1	1,356	32	4,820	\$ -	\$ -

**5 TO 15 YEAR ROADWAY RECONSTRUCTION PLAN**

<b>Street Name</b>	<b>Section of Roadway</b>	<b>Condition Rating</b>	<b>Volume Rating</b>	<b>Total Rating</b>	<b>Length of Road</b>	<b>Width of Road</b>	<b>Area of Road</b>	<b>Cost per SY</b>	<b>Estimated Cost to Repair</b>
<b>2041+ Road Program Continued</b>									
W. Market Street	6th St to the railroad	1	5	5	775	32	2,806	\$ -	\$ -
W. Market Street	Ridge Rd to Cedar Ridge Ct	1	2	2	355	32	1,312	\$ -	\$ -
W. Spruce Street	3rd St to 4th St	1	3	3	350	32	1,244	\$ -	\$ -
W. Spruce Street	4th St to 5th St	1	3	3	340	32	1,259	\$ -	\$ -
W. Spruce Street	5th St to 7th St	1	3	3	600	32	2,183	\$ -	\$ -
Wyckford Drive	Branford Terrace to Borough Line	1	3	3	1,197	32	4,255	\$ -	\$ -
Wyckford Drive	Essex Ct North to Borough Line	1	3	3	429	32	1,525	\$ -	\$ -
Wyckford Drive	Essex Ct South to Branford Terrace	1	3	3	728	32	2,590	\$ -	\$ -
Wyckford Way	entire road	1	2	2	615	35	2,442	\$ -	\$ -
								<b>Estimated Cost 2041+:</b>	<b>\$ -</b>

**APPENDIX D**

**PERKASIE BOROUGH ROADWAY CONDITION MAP**



LEGEND

ROAD COLOR	CONDITION RATING
	1
	2
	3
	3.5
	4
	4.5
	5

ONLY THOSE PLANS INCORPORATING THE RAISED PROFESSIONAL SEAL SHOULD BE CONSIDERED OFFICIAL AND RELIED UPON BY USER. THIS PLAN IS PREPARED SPECIFICALLY FOR THE CLIENT AND PROJECT DESIGNATED HEREON. MODIFICATION, REVISION, DUPLICATION OR USE WITHOUT THE CONSENT OF GILMORE & ASSOCIATES, INC. IS PROHIBITED. © COPYRIGHT 2021 GILMORE & ASSOCIATES, INC. ALL RIGHTS RESERVED.

LOCATIONS OF EXISTING UNDERGROUND UTILITIES/FACILITIES SHOWN HEREON HAVE BEEN DEVELOPED FROM RECORDS, FIELD MARKOUTS BY UTILITY OWNERS, AND/OR ABOVE-GROUND OBSERVATION OF THE SITE. NO EXCAVATIONS WERE PERFORMED IN THE PREPARATION OF THESE DRAWINGS. THEREFORE ALL UTILITIES SHOWN SHOULD BE CONSIDERED APPROXIMATE IN LOCATION, DEPTH, AND SIZE. THE POTENTIAL EXISTS FOR OTHER UNDERGROUND UTILITIES/FACILITIES TO BE PRESENT WHICH ARE NOT SHOWN ON THE DRAWINGS. ONLY THE VISIBLE LOCATIONS OF UNDERGROUND UTILITIES/FACILITIES AT THE TIME OF FIELD SURVEY SHALL BE CONSIDERED TRUE AND ACCURATE. COMPLETENESS OR ACCURACY OF UNDERGROUND UTILITIES/FACILITIES ARE NOT GUARANTEED BY GILMORE & ASSOCIATES, INC.

PENNSYLVANIA ONE CALL SYSTEM, INC.  
 925 Inlin Run Road  
 West Mifflin, Pennsylvania  
 15122 - 1078

BEFORE YOU DIG ANYWHERE IN PENNSYLVANIA! CALL 1-800-242-1776  
 NON-MEMBERS MUST BE CONTACTED DIRECTLY  
 PA LAW REQUIRES THREE WORKING DAYS NOTICE TO UTILITIES BEFORE YOU EXCAVATE, DRILL, BLAST OR DEMOLISH

ALL CONTRACTORS WORKING ON THIS PROJECT SHALL VERIFY LOCATION AND DEPTH OF ALL UNDERGROUND UTILITIES/FACILITIES PRIOR TO START OF WORK AND SHALL COMPLY WITH THE REQUIREMENTS OF P.L. 852, NO. 287 DECEMBER 10, 1974 AS LAST AMENDED ON NOVEMBER 2, 2016, PENNSYLVANIA ACT 121.

OWNER: BOROUGH OF PERKASIE 820 W. CHESTNUT STREET PERKASIE, PA 18944 215-257-5065		REV.	DESCRIPTION	DATE	BY
MUNICIPAL FILE NO.:		TAX MAP PARCEL NO.:	<b>ROADWAY CONDITION MAP</b> <b>2025 PERKASIE ROADWAY</b> <b>CONDITION SURVEY</b> BOROUGH OF PERKASIE, BUCKS COUNTY, PENNSYLVANIA		
DATE: 11/04/2025		TOTAL AREA:			
SCALE: 1"=500'		<b>GILMORE &amp; ASSOCIATES, INC.</b> <b>ENGINEERING &amp; CONSULTING SERVICES</b> <small>65 EAST BUTLER AVENUE, SUITE 100, NEW BRITAIN, PA 18901-5106 • (215) 345-4330 • www.gilmore-assoc.com</small>			
				JOB NO.: 2025-00073 SHEET NO.: 1 OF 1	
DESIGNED BY: DCR	DRAWN BY: TMW	CHECKED BY: DCR			