

LEGEND

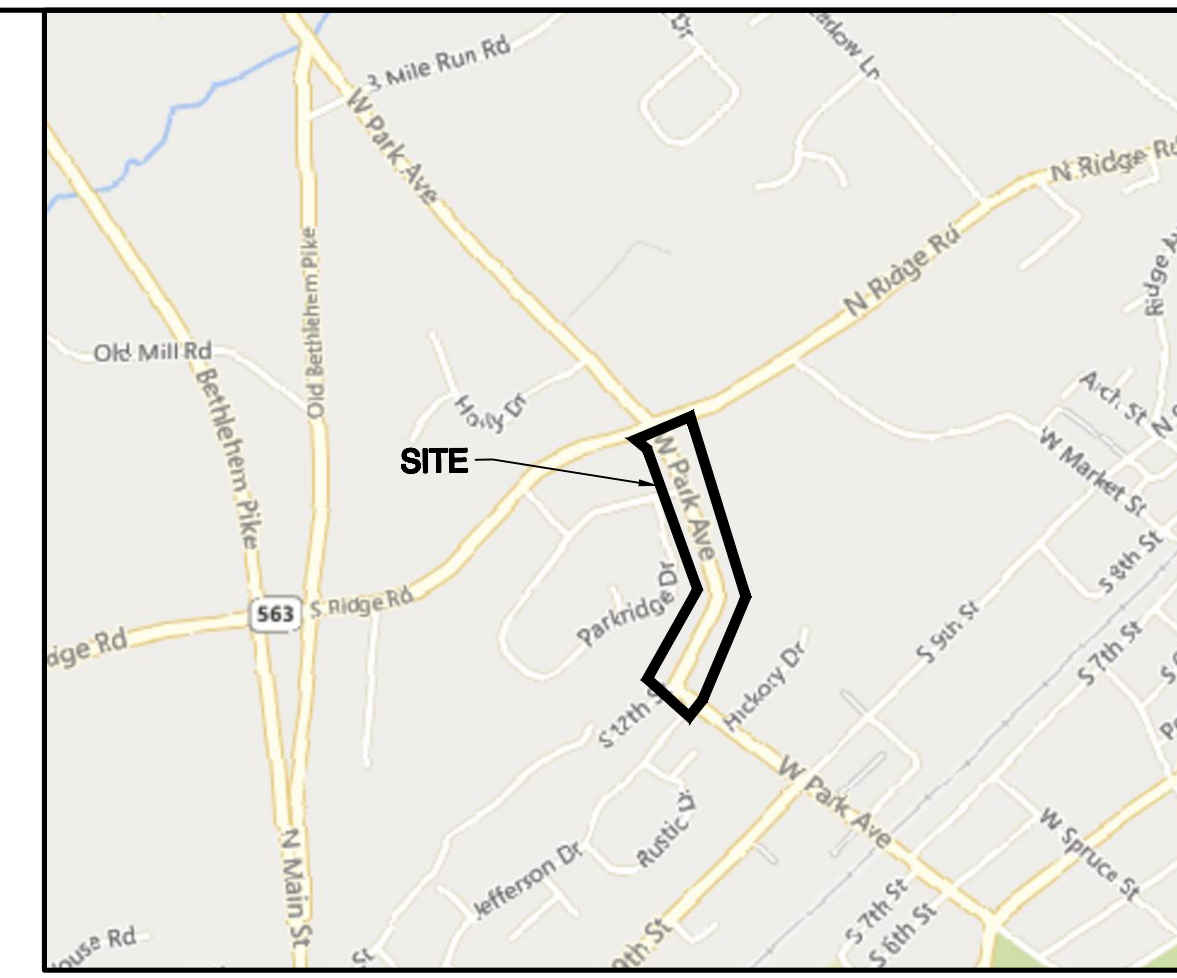
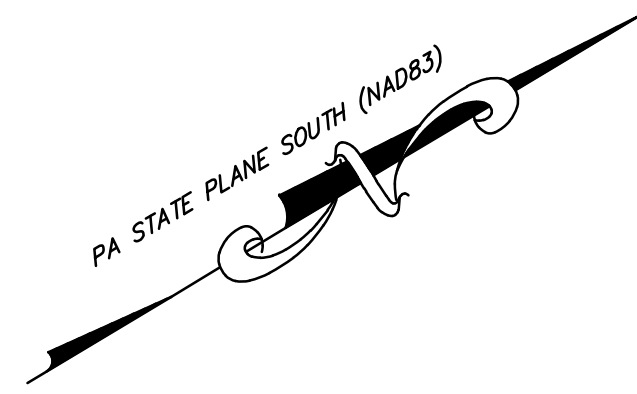
	EXISTING	PROPOSED
CURB	[Symbol]	[Symbol]
EDGE OF PAVE	[Symbol]	[Symbol]
LEGAL RIGHT-OF-WAY	[Symbol]	[Symbol]
PROPERTY LINE	[Symbol]	[Symbol]
FENCE LINE	[Symbol]	[Symbol]
TREE LINE	[Symbol]	[Symbol]
SANITARY SEWER LINE	[Symbol]	[Symbol]
STORM INLET	[Symbol]	[Symbol]
STORM MANHOLE	[Symbol]	[Symbol]
SANITARY MANHOLE	[Symbol]	[Symbol]
GAS VALVE	[Symbol]	[Symbol]
WATER METER	[Symbol]	[Symbol]
SIGN	[Symbol]	[Symbol]
UTILITY POLE	[Symbol]	[Symbol]
FIRE HYDRANT	[Symbol]	[Symbol]
LIGHT FIXTURE	[Symbol]	[Symbol]
CONIFEROUS TREE	[Symbol]	[Symbol]
DECIDUOUS SHADE TREE	[Symbol]	[Symbol]
PROPOSED SIDEWALK	[Symbol]	[Symbol]
PROPOSED FULL DEPTH PAVEMENT REPAIR	[Symbol]	[Symbol]
PROPOSED ROADWAY OVERLAY (FUNDED BY BOROUGH)	[Symbol]	[Symbol]

GENERAL NOTES:

- THIS PLAN IS BASED ON A FIELD SURVEY PERFORMED BY GILMORE & ASSOCIATES, INC. ON AUGUST 6, 2021 AND THE REFERENCED INFORMATION LISTED HEREON. IT WAS PREPARED WITHOUT THE BENEFIT OF A TITLE REPORT.
- SUBJECT TO COVENANTS, RESTRICTIONS AND/OR EASEMENTS EITHER WRITTEN OR IMPLIED.
- VERTICAL DATUM IS NAVD88 AND WAS ESTABLISHED BY GLOBAL POSITIONING SYSTEM (GPS) WITH OBSERVATIONS REFERENCED TO THE KEYNET-GPS VIRTUAL REFERENCE STATION SYSTEM (TOPCON TOPSURV GPS BASE STATION NETWORK).
- HORIZONTAL DATUM IS BASED ON 1983 STATE PLANE COORDINATE SYSTEM ESTABLISHED BY GLOBAL POSITIONING SYSTEM (GPS) WITH OBSERVATIONS REFERENCED TO THE KEYNET-GPS VIRTUAL REFERENCE STATION SYSTEM (TOPCON TOPSURV GPS BASE STATION NETWORK).
- THE ROAD RIGHT-OF-WAY LINES SHOWN ARE APPROXIMATE AND BASED ON THE REFERENCED PLANS AND DEEDS LISTED HEREON AND THE LOCATION OF PROPERTY CORNER MARKERS FOUND AND SHOWN HEREON.
- PRELIMINARY DESIGN INCLUDES THE RELOCATION OF EXISTING UTILITY POLES. FINAL DESIGN MAY INCLUDE RELOCATION OF OVERHEAD WIRES TO UNDERGROUND ELECTRIC.

REFERENCES:

- TAX MAP FOR THE BOROUGH OF PERKASIE, COUNTY OF BUCKS, COMMONWEALTH OF PENNSYLVANIA.
- PLAN ENTITLED "FINAL PLAN OF PROPERTY OF BUCKS COUNTY BANK & TRUST CO.", PREPARED BY GEORGE R. NEVELLS R.S., DATED 12/5/1982, AND FILED IN THE BUCKS COUNTY RECORDER OF DEED OFFICE ON 2/14/1983 IN PLAN BOOK 25, PAGE 26.
- PLAN ENTITLED "FINAL PLAN OF SUBDIVISION MADE FOR ELSIE B WITMER", PREPARED BY RUVWILER AND WALTERS, INC., DATED 4/18/1968, AND FILED IN THE BUCKS COUNTY RECORDER OF DEED OFFICE ON 5/21/1968 IN PLAN BOOK 54, PAGE 23.
- PLAN ENTITLED "DEED PLOTTING PLAN OF PROPERTY OF JOANNE PATRICIA HACKETT", PREPARED BY G. MARVIN HENDRICKS P.E., DATED 5/18/1979, AND LAST REVISED ON 7/5/1979, AND FILED IN THE BUCKS COUNTY RECORDER OF DEED OFFICE ON 9/17/1979 IN PLAN BOOK 187, PAGE 34.
- PLAN ENTITLED "PARKRIDGE PLANNED RESIDENTIAL DEVELOPMENT", PREPARED BY ENVIRONMENTAL DESIGN CONSULTANTS, INC., DATED 12/2/1977, AND LAST REVISED ON 5/1/1978, AND FILED IN THE BUCKS COUNTY RECORDER OF DEED OFFICE ON 6/5/1979 IN PLAN BOOK 183, PAGE 41.
- DEEDS AS NOTED



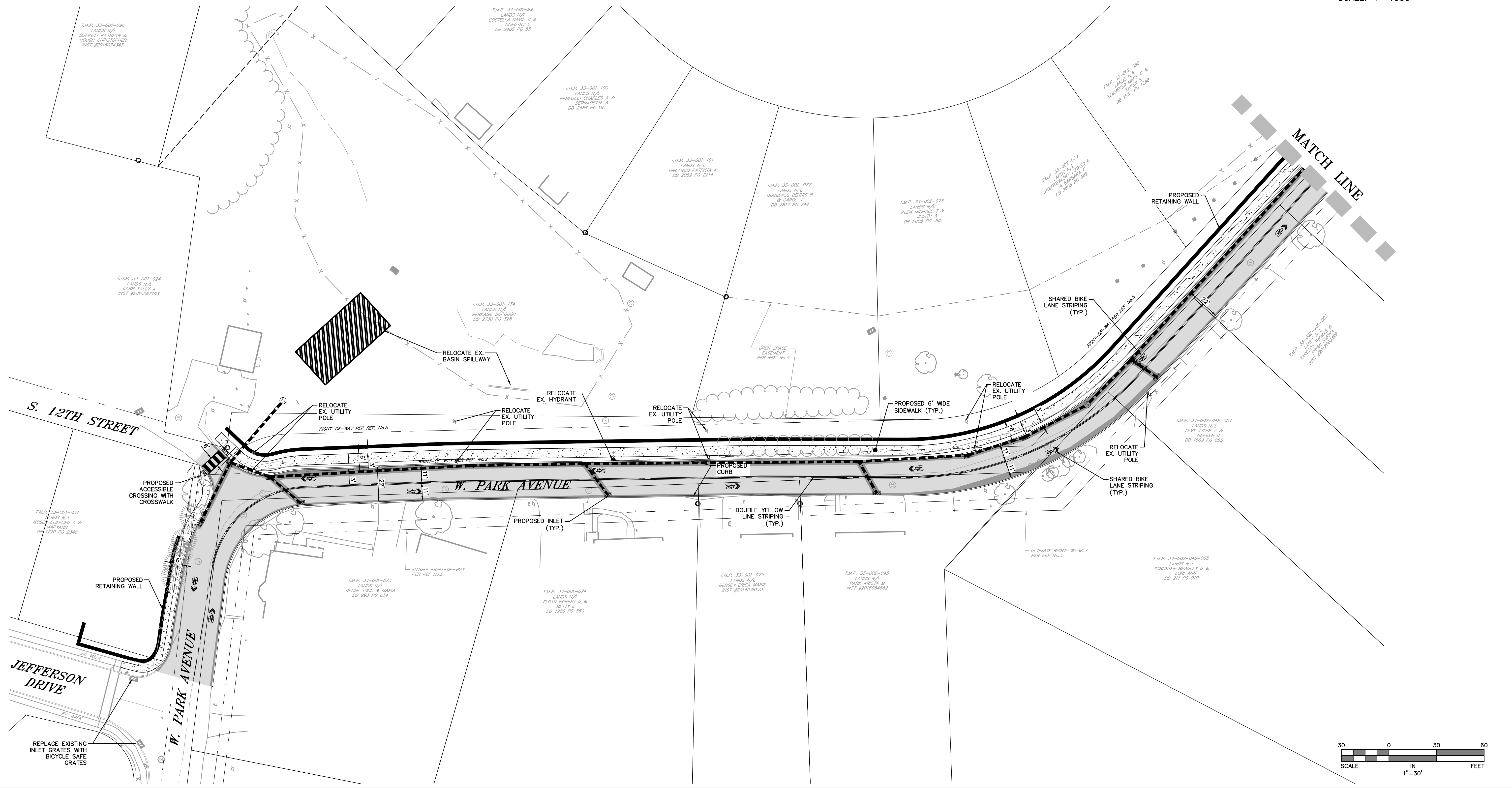
GILMORE & ASSOCIATES, INC.
ENGINEERING & CONSULTING SERVICES

161 EAST BRITTON AVENUE, SUITE 100, NEW BRITAIN, PA 19101-3145-3300 • www.gilmoreassoc.com

ONLY THOSE PLANS INCORPORATING THE PROFESSIONAL SEAL SHOULD BE CONSIDERED OFFICIAL AND RELIED UPON BY USER. THIS PLAN IS THE PROPERTY OF GILMORE & ASSOCIATES, INC. NO PART OF THIS HEREON, MODIFICATION, REVISION, DUPLICATION OR USE, WITHOUT THE CONSENT OF GILMORE & ASSOCIATES, INC. IS PROHIBITED.

© COPYRIGHT 2023 GILMORE & ASSOCIATES, INC. ALL RIGHTS RESERVED

NOT APPROVED FOR CONSTRUCTION



LOCATION MAP

SCALE: 1"=1000'

REV.	DESCRIPTION	DATE	BY

PRELIMINARY PLANS
WEST PARK AVENUE IMPROVEMENTS
PERKASIE BOROUGH, BUCKS COUNTY, PENNSYLVANIA

LAYOUT PLAN (1 OF 2)

GILMORE & ASSOCIATES, INC.
ENGINEERING & CONSULTING SERVICES

PROJECT No.: 2021-01199

OWNERS INFO:
PERKASIE BOROUGH
620 W. CHESTNUT
PERKASIE, PA 19844
(215) 257-5065

MUNICIPAL FILE No.: N/A

TAX MAP PARCEL No.: N/A

TOTAL AREA: N/A TOTAL LOTS: N/A

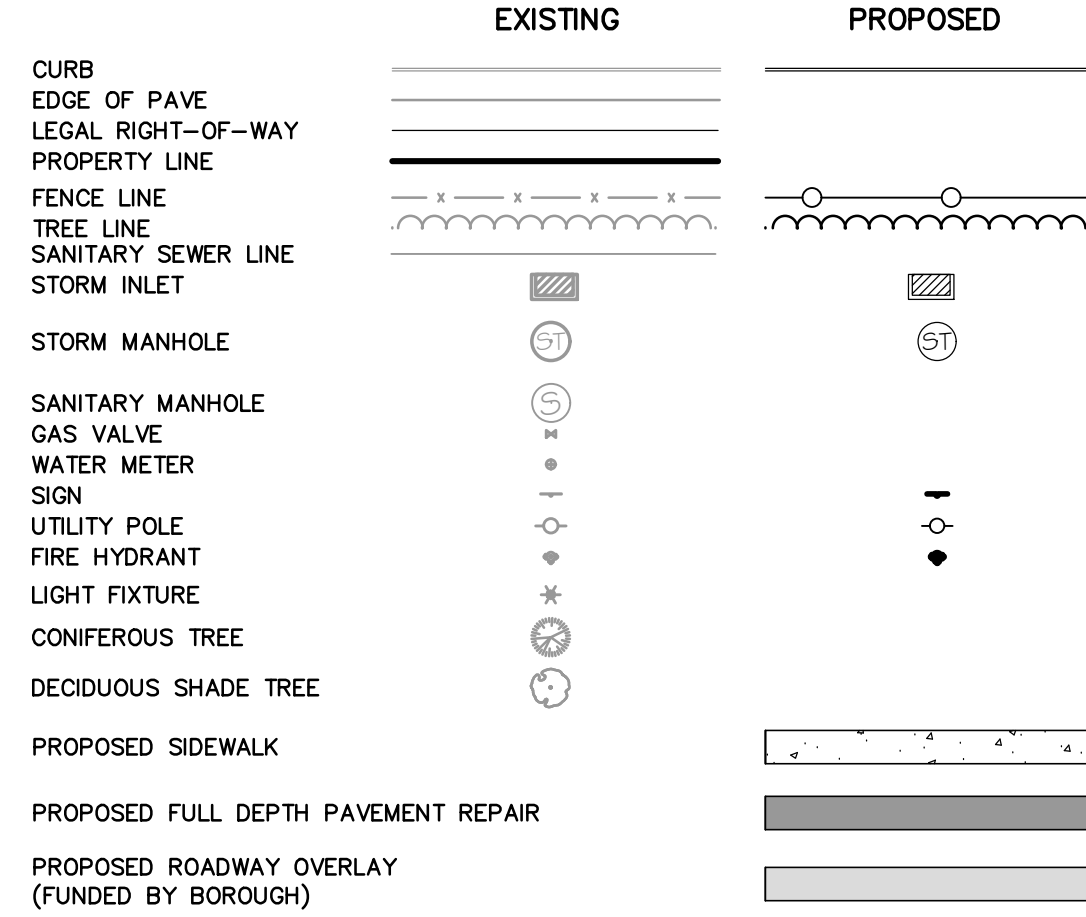
DATE: 11/1/2021 SCALE: 1"=30'

DRAWN BY: BS/TW CHECKED BY: DR

SHEET NO.: 1 OF 2

C:\MUNICIPAL\2021\2101199-PB_W_Park Avenue Improvements\DESIGN\CAD\Production Drawings\2101199_LAYOUT_2023-08-22.dwg Layout: 1 Layout Plan (1 of 2) Plotted By: Wallace, on Thu Sep 14, 2023 at 9:49am

LEGEND

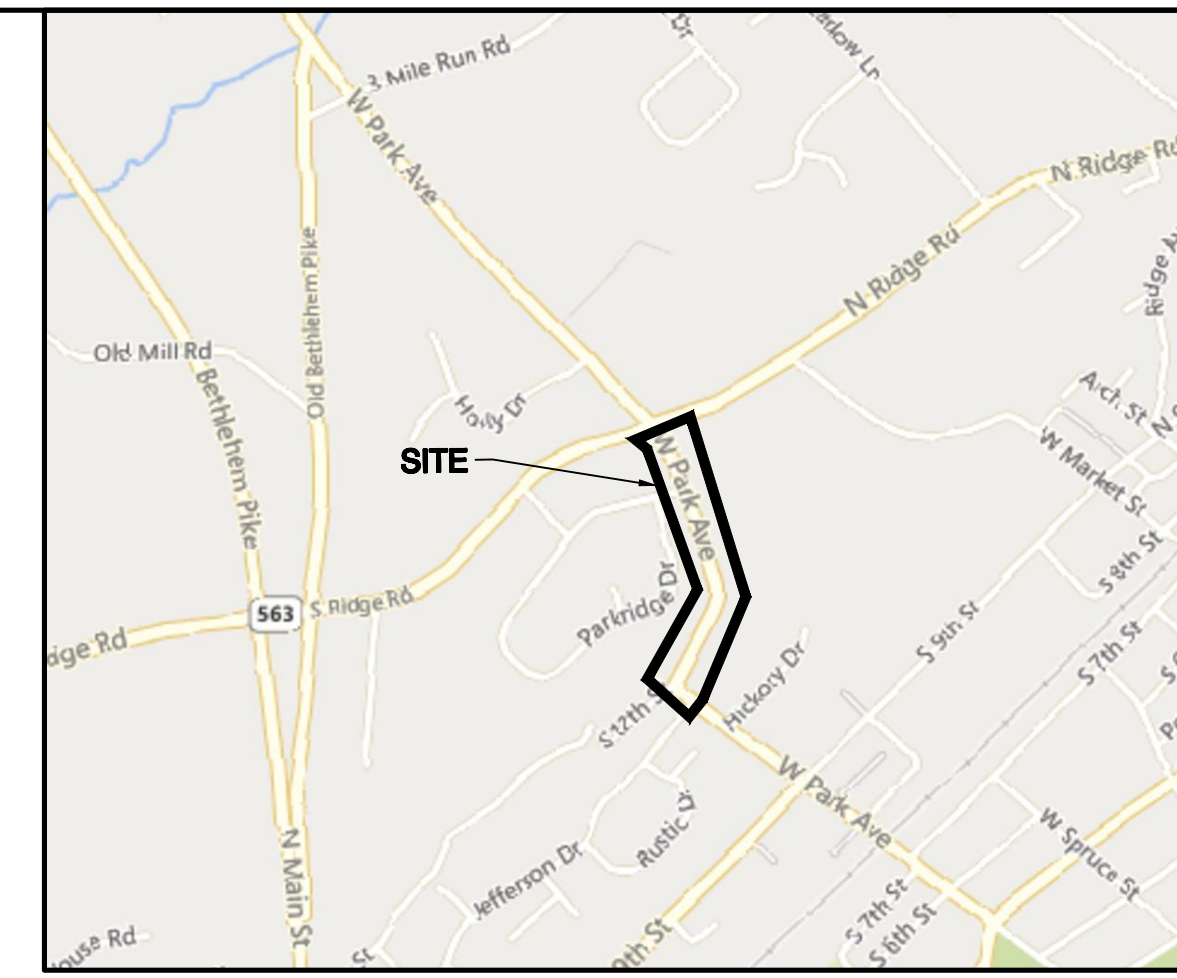
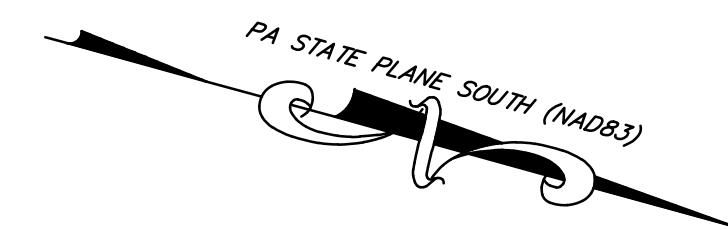


GENERAL NOTES:

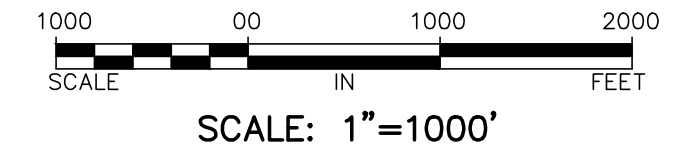
- THIS PLAN IS BASED ON A FIELD SURVEY PERFORMED BY GILMORE & ASSOCIATES, INC. ON AUGUST 6, 2021 AND THE REFERENCED INFORMATION LISTED HEREON. IT WAS PREPARED WITHOUT THE BENEFIT OF A TITLE REPORT.
- SUBJECT TO COVENANTS, RESTRICTIONS AND/OR EASEMENTS EITHER WRITTEN OR IMPLIED.
- VERTICAL DATUM IS NAVD88 AND WAS ESTABLISHED BY GLOBAL POSITIONING SYSTEM (GPS) WITH OBSERVATIONS REFERENCED TO THE KEYNET-GPS VIRTUAL REFERENCE STATION SYSTEM (TOPCON TOPSURV GPS BASE STATION NETWORK).
- HORIZONTAL DATUM IS BASED ON 1983 STATE PLANE COORDINATE SYSTEM ESTABLISHED BY GLOBAL POSITIONING SYSTEM (GPS) WITH OBSERVATIONS REFERENCED TO THE KEYNET-GPS VIRTUAL REFERENCE STATION SYSTEM (TOPCON TOPSURV GPS BASE STATION NETWORK).
- THE ROAD RIGHT-OF-WAY LINES SHOWN ARE APPROXIMATE AND BASED ON THE REFERENCED PLANS AND DEEDS LISTED HEREON AND THE LOCATION OF PROPERTY CORNER MARKERS FOUND AND SHOWN HEREON.
- PRELIMINARY DESIGN INCLUDES THE RELOCATION OF EXISTING UTILITY POLES. FINAL DESIGN MAY INCLUDE RELOCATION OF OVERHEAD WIRES TO UNDERGROUND ELECTRIC.

REFERENCES:

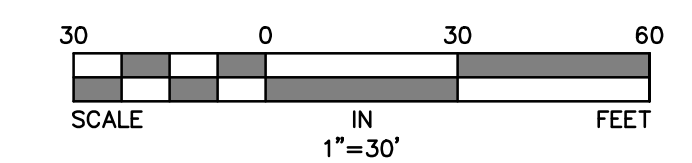
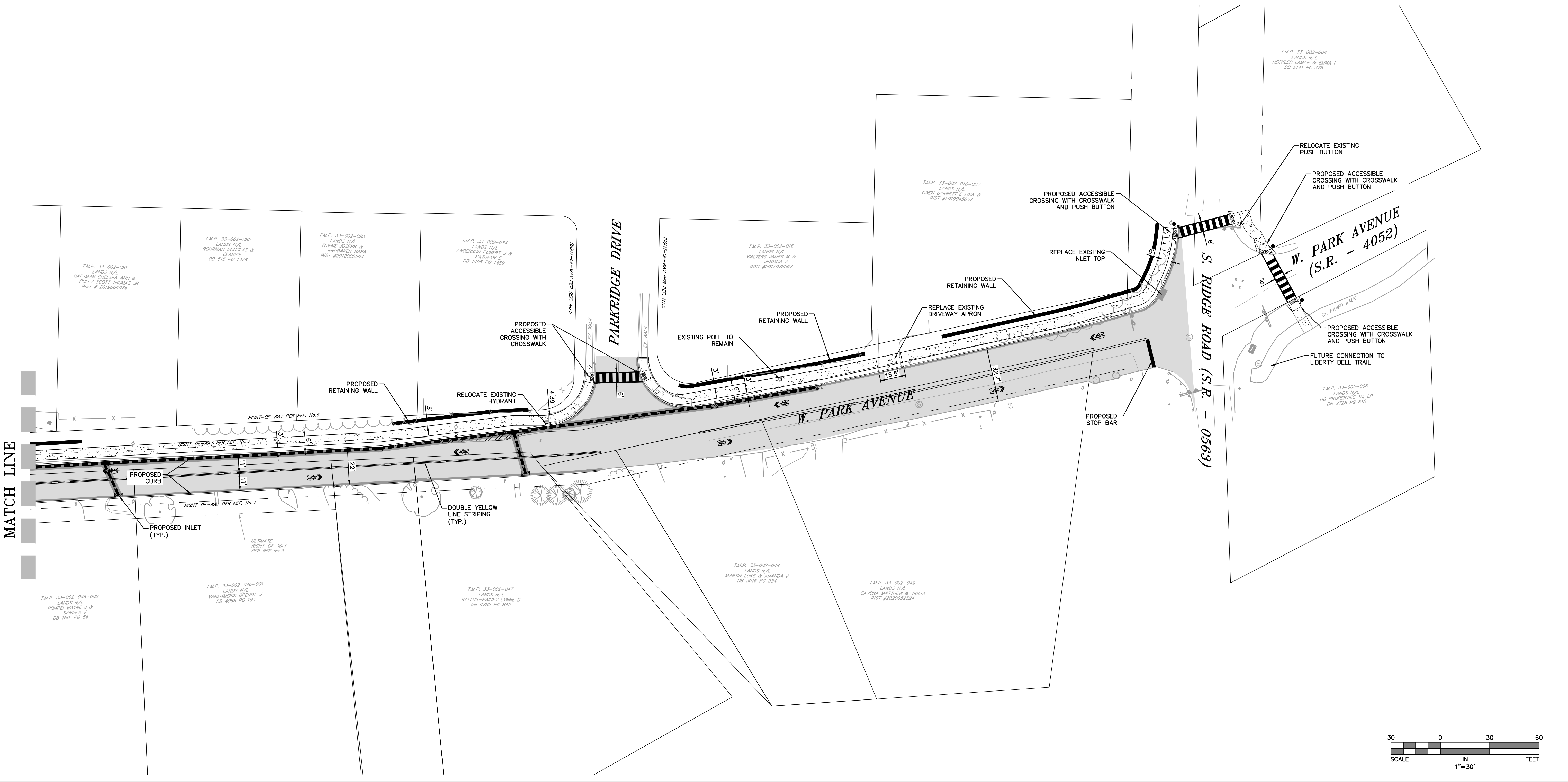
- TAX MAP FOR THE BOROUGH OF PERKASIE, COUNTY OF BUCKS, COMMONWEALTH OF PENNSYLVANIA.
- PLAN ENTITLED "FINAL PLAN OF PROPERTY OF BUCKS COUNTY BANK & TRUST CO.", PREPARED BY GEORGE R. NEVELLS R.S., DATED 12/5/1982, AND FILED IN THE BUCKS COUNTY RECORDER OF DEED OFFICE ON 2/14/1983 IN PLAN BOOK 25, PAGE 26.
- PLAN ENTITLED "FINAL PLAN OF SUBDIVISION MADE FOR ELSIE B WITWER", PREPARED BY URWILER AND WALTERS, INC., DATED 4/18/1968, AND FILED IN THE BUCKS COUNTY RECORDER OF DEED OFFICE ON 5/21/1968 IN PLAN BOOK 54, PAGE 23.
- PLAN ENTITLED "DEED PLOTTING PLAN OF PROPERTY OF JOANNE PATRICIA HACKETT", PREPARED BY G. MARVIN HENDRICKS P.E., DATED 5/18/1979, AND LAST REVISED ON 7/5/1979, AND FILED IN THE BUCKS COUNTY RECORDER OF DEED OFFICE ON 9/17/1979 IN PLAN BOOK 187, PAGE 34.
- PLAN ENTITLED "PARKRIDGE PLANNED RESIDENTIAL DEVELOPMENT", PREPARED BY ENVIRONMENTAL DESIGN CONSULTANTS, INC., DATED 12/2/1977, AND LAST REVISED ON 5/1/1978, AND FILED IN THE BUCKS COUNTY RECORDER OF DEED OFFICE ON 6/5/1979 IN PLAN BOOK 183, PAGE 41.
- DEEDS AS NOTED



LOCATION MAP



C:\MUNICIPAL\2021\2101199-PB_W_Park Avenue Improvements\DESIGN\CAD\Production Drawings\2101199_LAYOUT_2023-08-22.dwg Layout: 2 Layout Plan (2 of 2) Plotted By: twillison, on Thu Sep 14, 2023 at 10:01am



GILMORE & ASSOCIATES, INC.
ENGINEERING & CONSULTING SERVICES

65 EAST BATTLE AVENUE, SUITE 100, NEW BRITAIN, PA 19101-3103 • www.gilmore-inc.com

ONLY THOSE PLANS INCORPORATING THE PROFESSIONAL SEAL SHOULD BE CONSIDERED OFFICIAL AND RELIED UPON BY USER. THIS PLAN IS THE PROPERTY OF GILMORE & ASSOCIATES, INC. NO REPRODUCTION, MODIFICATION, REVISION, DUPLICATION OR USE, WITHOUT THE CONSENT OF GILMORE & ASSOCIATES, INC. IS PROHIBITED. © COPYRIGHT 2023 GILMORE & ASSOCIATES, INC. ALL RIGHTS RESERVED.

REV.	DESCRIPTION	DATE	BY

REV.	DESCRIPTION	DATE	BY

PRELIMINARY PLANS
WEST PARK AVENUE IMPROVEMENTS
PERKASIE BOROUGH, BUCKS COUNTY, PENNSYLVANIA

LAYOUT PLAN (2 OF 2)

GILMORE & ASSOCIATES, INC.
ENGINEERING & CONSULTING SERVICES

PROJECT No.: 2021-01199

OWNERS INFO:
PERKASIE BOROUGH
620 W. CHESTNUT
PERKASIE, PA 19344
(215) 257-5065

MUNICIPAL FILE No.: N/A

TAX MAP PARCEL No.: N/A

TOTAL AREA: N/A TOTAL LOTS: N/A

DATE: 11/1/2021 SCALE: 1"=30'

DRAWN BY: BS/TW CHECKED BY: DR

SHEET NO.: 2 OF 2

NOT APPROVED FOR CONSTRUCTION